



---

# Wales Travel Magazine

Autumn 2023



HOLIDAYS WALES



# From the Editor

*Autumn is here and winter is on its way. We know you may feel more like cosying up on the sofa at home with a glass of something and the TV remote than going out. But if you're anything like us, once you make the effort to go out, you're always pleased you did.*

---

Autumn, with its dark mornings and gloomy evenings, and the long slog through until the next holiday, can get us down. It's only natural.

It can be tempting to stay home and hibernate.

But actually, it does us all good to get out. Our suggestion is to wrap up warm and enjoy a bracing walk.

As the leaves turn golden and the air turns crisp, Wales is transformed into a wonderland of autumnal beauty. From the rolling hills of the Brecon Beacons to the rugged coastline of Snowdonia, there are countless opportunities

to experience the country's natural splendour at its finest.

So, grab your coat, lace up your walking boots, grab your camera, and head to Wales this autumn to experience the country's natural beauty at its finest. With so many fantastic short autumnal walks to choose from, you're sure to enjoy yourself.

*Marta & Radek*



HOLIDAYS WALES



## Discover Wales's Autumnal Splendour: Stunning Short Walks

---

### LADY MARY'S WALK, GWYDIR FOREST, LLANRWST

This gentle 1.5-mile loop through the Gwydir Forest is a perfect choice for families and those looking for a relaxing stroll. The path winds through a tapestry of golden leaves, offering stunning views of the Conwy Valley. Longer and more challenging walks also start from the same location.

*Accessibility:* This walk is suitable for most walking abilities, although there are uneven surfaces and three 60cm chicanes en route.

*Afterwards:* Visit the 13th-century Gwydir Castle, or enjoy a leisurely afternoon tea at the nearby Conwy Falls Cafe.

### CEFN FARM WALK, CRYCHAN FOREST, LLANDOVERY

---

This 2.5-mile trail takes you through a tranquil mix of woodland and farmland, with plenty of opportunities to spot wildlife, such as red squirrels and buzzards. The autumn colours are particularly spectacular here, making it a must-visit for photographers.



*Accessibility:* This walk is of moderate difficulty. For a fully accessible trail, head to nearby Cwm Rhaeadr Forest.

*Afterwards:* Explore the historic town of Llandovery or visit Ystrad Nurseries, a popular local garden centre with a café.

## BLUESTONE WALK, CRAIG CERRIG, GLEISIAD AND FAN FRYNYCH NATIONAL NATURE RESERVE

This strenuous 2-mile hike rewards you with breathtaking views of the Brecon Beacons. The path ascends through heather and bilberry to a cairn, offering panoramic vistas of the surrounding mountains including Pen y Fan.

*Accessibility:* Although this walk is short in distance, it is challenging and not suitable for wheelchair users or those with limited mobility.

*Afterwards:* Visit the nearby Llangorse Lake, or pack a flask and enjoy a picnic lunch with stunning views.



## DUCHESS RIDE VIEWPOINT TRAIL, WHITESTONE, CHEPSTOW

This 3-mile route is a longer version of the 1.5-mile Wonders of Whitestone trail. It takes in three viewpoints with stunning views of the Wye Valley (and each with a bench to rest on) and continues on to the Duchess Ride Viewpoint. The path is mostly flat and easy to follow, making it a good choice for families with young

children.

*Accessibility:* This walk is graded Easy and is suitable for most abilities, although there is one stony section.

*Afterwards:* Visit the historic Tintern Abbey, or take a boat trip along the River Wye.

# All weather and rainy days activities in Pembrokeshire

*“Read on for our favourite all-weather – or even wet weather – days out in Pembrokeshire and West Wales. And, what’s more, we’ve made sure to include activities that are at least partially open through the winter months, although please do check before travelling.*”

---

## Scolton Manor

There’s plenty to see and do at Scolton Manor, situated just outside Haverfordwest. From April to October visit the Victorian Manor House, with a family ticket costing under £10. Parking is an extra small charge. All year round, explore the Park, Grounds and Walled Garden where there’s plenty to see, even in the rain – just don’t forget your wellies and waterproofs! A range of exciting play areas and trails await you in the Park, and there’s even a Steam Train! Additionally, you’ll find a Beekeeping Centre, the Station Shop and Edie’s Tea Room where you can warm up and dry off. The recipe for a great day out!

## Folly Farm

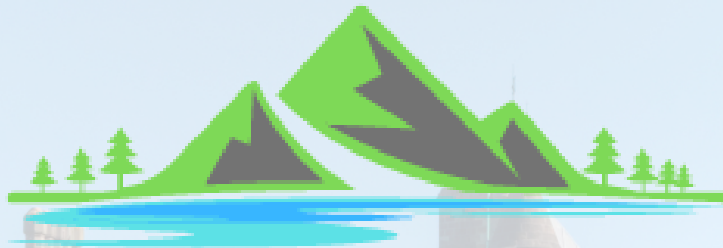
A fantastic day out for all the family, Folly Farm has plenty to offer on a rainy day. Head for Carousel Woods for soft play areas, and an indoor adventure playground. There’s a handy café and burger bar for adults, too! Don’t forget the vintage indoor funfair which is packed with rides aplenty for all ages. The Jolly Barn, Tractor Train and some of the indoor zoo exhibits are all good



wet-weather activities, too. Folly Farm is even better on a dry day, do we recommend taking advantage of the boomerang ticket offer, meaning you can return for half price.

## Tudor Merchant's House

A good choice to combine with a visit to Tenby Lifeboat Station, the Tudor Merchant’s House is in the heart of the historic town and will give you a taste of life in the 15th Century. Learn how the merchant’s produce including salt, linen, painted cloth, wine and sugar were imported from overseas or arrived by coastal trade routes. This National Trust attraction does have limited opening, with Tuesdays, Thursdays and Saturdays being the norm in the summer months and fewer days in the off-season. Keep an eye on the website for details.



HOLIDAYS WALES



[holidays-wales.co.uk](https://holidays-wales.co.uk)



[hello@holidays-wales.co.uk](mailto:hello@holidays-wales.co.uk)

Disclaimer: The contents of this magazine are fully protected by copyright and may not be reproduced without permission. The images are for illustrative purposes only. All copyrights observed.